



Le Touronnet  
Route des Costes  
06140 Tourrettes-sur-Loup  
+33 664 791 755  
laurelie@ldls-paysages.com  
<http://laureliedelasalle-paysages.com/>

FRANCE

WhatsApp +33 664 791 755



PHILADELPHIA February 29<sup>th</sup> - March 8<sup>th</sup> 2020

<https://theflowershow.com/experiences/exhibits-and-highlights/major-exhibits>

#### Laurélie de la Salle – a brief biography

*French landscape architect and designer Laurélie de la Salle has a scientific background acquired at the Horticultural High School of Antibes in France. She also attended the University of Luminy, Faculty of Sciences in Marseille, then went on to the ENSP National Landscaping University in Versailles.*

*In 1996, she graduated as a DPLG Landscape Architect, and received unanimous congratulations from the jury. Among them was her mentor Alain Richert, landscape architect from whom she learned a great deal.*

*In 1997, she created her own landscape company "Laurélie de la Salle Paysages" in her sunny homeland of Provence. Laurélie also dedicated 12 years to teaching, running workshops to prepare students for admission to landscape schools. She went on to become a landscape advisor for French Riviera protected sites for a further eight years.*

*To date, Laurélie de la Salle has created over 80 parks and gardens, mostly for private clients. Over the years, she has observed nature with a growing awareness of environmental issues, leading her to use her knowledge and experience to create environmentally friendly gardens. She is convinced that sustainable development is not an option but a necessity.*

The **Riviera Allegory** garden draws its inspiration from « Riviera holidays » as its main theme, also by the life story of Princess Grace to whom this show is a tribute, bearing in mind Grace Kelly was born in Philadelphia 90 years ago.

#### This led me to do a little research on the topic

My first question was 'what does Riviera actually mean?' The word originates from 'Ripa' which is Latin for shore. The French Riviera was originally an area confined between the Italian border and Cap Ferrat where the Alps fall abruptly into the Mediterranean Sea. This has brought about the formation of stupendous shores composed of beautiful capes. Each cap shelters small creeks with pebble beaches which offer intimacy. The most emblematic one of these capes is the Rock of Monte Carlo, where Grace Kelly lived. I found it particularly inspiring that there are many shots of these capes in 'To Catch a Thief', as well as on the poster of the movie.

#### My own experience

I was born in this very same area so I have always taken these incredible landscapes for granted. However, when I left my native land for my higher education, I was amazed by the beauty of this environment every single time I came home. That's when I started to pay attention to one specific detail: the two distinctive shades of blue in the sea. Indeed, the Mediterranean has very particular shades of light and dark blue which contrast due to the sudden variation in the level of the seabed.

### A little history of plants and gardens on the Riviera

First of all, Alep pine trees are spontaneous to these capes as they can grow in thin layers of soil. They are naturally adapted to heat and sea spray, and they release essential oils to protect themselves from the sun. They are the ideal hosts for cicadas.

Secondly, olive trees have been planted around the Mediterranean since Roman times and are particularly emblematic of the Riviera.

Thirdly, perennials and shrubs, native or introduced as of 1870 with the introduction of the train which brought winter residents. Before these times, the area was too remote to attract visitors. But as British and Russian, then later American, citizens discovered the mild winters and the eternal beauty of the Riviera, they started building large properties with extravagant gardens, exchanging plants and advice, which led to a sequence of plant trends over the years.

There was the succulents' phase, well-adapted to drought and sea spray, but also the Citrus phase with their marvellous fragrance in spring and delicious winter fruit.

There were even cypresses which traced alleys and made thick hedges for privacy.

Many varieties of palm trees were introduced, and I specifically chose not to include them (in this Riviera Allegory) as they are currently attacked by parasites, so can survive only with strong chemical treatment, which does not correspond to my philosophy of gardens.

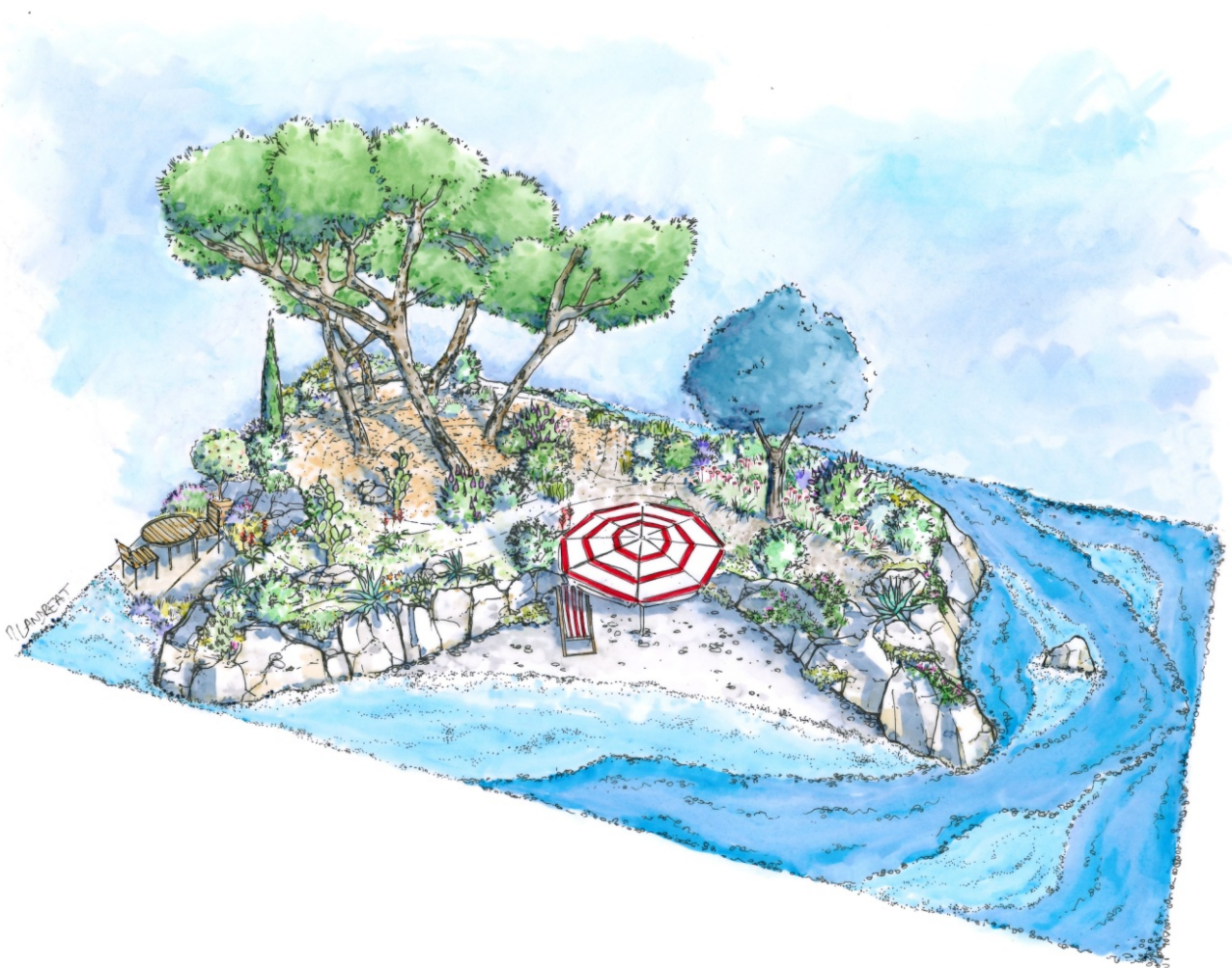


### Footnote

My project **showcases the unique opportunity to create a beautiful yet sustainable garden**. This scented garden is beneficial to pollinators while being water-efficient, and offers an alternative to water-thirsty lawns which don't support biodiversity.

After the "*Harmonious Garden of Life*", silver medal at the RHS Chelsea Flower Show in London in May 2019, this new garden "*Riviera Allegory*" represents a cap which invites visitors and garden enthusiasts to experience the unique rocky terrain, the mild climate, the exotic and endemic plants on the French Riviera, and the unbelievable colours of the Mediterranean Sea portrayed here by *Perovskia*, *Festuca* for blue shades and *Allysum* for the foam. Take a moment to enjoy its stunning colours, imagine yourself on a sunny afternoon on a deck chair shaded by a beach umbrella (whose colours suggest the flag of Monaco) and let the sounds of the waves and the cicadas in the pine trees cradle you for a nap.





Big thanks for “*Riviera Allegory* “ to all my team,  
to the Pennsylvanian Horticultural Society  
and to

**BURKE**  
**BROTHERS**  
Landscape Design / Build

<https://theflowershow.com/experiences/exhibits-and-highlights/major-exhibits>

Laurélie de la Salle - WhatsApp +33 664 791 755

[www.laureliedelasalle-paysages.com](http://www.laureliedelasalle-paysages.com)